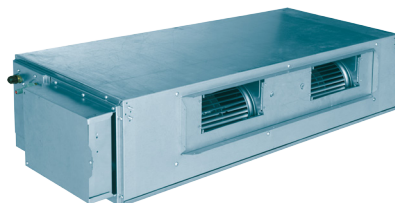




VRF Indoor Units Heat Pump / Heat Recovery



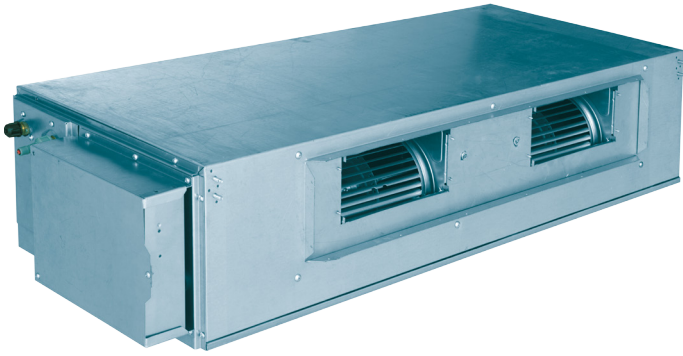
**EW · EF · EU · EF · EL · EC Series Indoor Units : 9-48k btu
and FA Units**

FEATURES & SPECIFICATIONS

YMGI Group

601 Arrow Ln, O'Fallon, MO 63366 • info@ymgigroup.com • ymgigroup.com • 866-833-3138

Medium/High Static Pressure Duct Hang Mount Indoor Unit



Wall Controller Included



Optional:



Bridge Controller



Thermostats

High Static Pressure Design

ESP can be up to 150 Pa (0.6 IWG).

Convenient Maintenance

Washable filter, and convenient service port for easy maintenance.

Easy Installation

Easily mount unit from joists or ceilings with threaded rods through four mounting slots.

Protection Functions

Built-in anti-freezing, fan motor overload, and temperature sensor malfunction protection.

Digital Display

Users and service technicians can use the digital display to see status and error codes.

Thermostat Controller

By using a bridge controller, North American style thermostats (Nest, Honeywell, Pro1, YMG I etc.) can be used for temperature control.

Model		VRFI-18EF-H2B(55)5	VRFI-24EF-H2B(55)5	VRFI-30EF-H2B(55)5	VRFI-36EF-H2B(55)5
Cooling Capacity	Btu/h	18000	24000	30000	36000
Heating Capacity	Btu/h	20000	27000	34000	40000
Power supply	V/∅/Hz	208/230/1/60	208/230/1/60	208/230/1/60	208/230/1/60
Power consumption	W	120	130	200	200
Airflow volume	m ³ /h	1000/800/600	1100/900/700	1700/1450/1100	1700/1450/1100
	CFM	590/470/355	650/530/410	1000/855/650	1000/855/650
Related Current Heating / Cooling	A	0.9	0.9	1.4	1.4
	Pa	70/0~100	70/0~100	70/0~100	70/0~100
ESP	IWG	up to 0.4"	up to 0.4"	up to 0.4"	up to 0.4"
	Pa	70/0~100	70/0~100	70/0~100	70/0~100
Sound pressure level (H/M/L)	dB(A)	44/40/36	45/41/37	46/44/42	46/44/42
Liquid Connecting Pipe Dia.	In.	∅3/8	∅3/8	∅3/8	∅3/8
Gas Connecting Pipe Dia.	In.	∅5/8	∅5/8	∅5/8	∅5/8
Drain Pipe External Dia.	In.	∅1	∅1	∅1	∅1
Drain Pipe Thickness	In.	3/32	3/32	3/32	3/32
Unit Dimensions (W x D x H)	In.	50 x 22 x 10 1/2	50 x 22 x 10 1/2	48 3/8 x 30 1/2 x 11 3/8	48 3/8 x 30 1/2 x 11 3/8
Shipping Dimensions (W x D x H)	In.	53 1/16 x 23 1/2 x 11 1/8	53 1/16 x 23 1/2 x 11 1/8	52 11/16 x 34 1/2 x 12	52 11/16 x 34 1/2 x 12
Net weight/ Gross weight	Lbs.	77/88	77/88	104/119	104/119
Loading 40' GP	set	192	192	128	128
Loading 40' HQ	set	216	216	128	128

Model		VRFI-42EF-H2B(55)5	VRFI-48EF-H2B(55)5	VRFI-72EF-H2B(55)5	VRFI-96EF-H2B(55)5
Cooling Capacity	Btu/h	42000	48000	69000	92000
Heating Capacity	Btu/h	47000	54000	77000	103000
Power supply	V/∅/Hz	208/230/1/60	208/230/1/60	208/230/1/60	208/230/1/60
Power consumption	W	220	220	800	900
Airflow volume	m ³ /h	2000/1550/600	2000/1700/1400	4000/3600/3200	4400/4000/3600
	CFM	1180/910/705	1180/1000/825	2355/2120/1885	2590/2355/2120
Related Current Heating / Cooling	A	1.6	1.6	5	6
	Pa	70/0~100	70/0~100	150/50~200	150/50~200
ESP	IWG	up to 0.4"	up to 0.4"	up to 0.8"	up to 0.8"
	Pa	70/0~100	70/0~100	150/50~200	150/50~200
Sound pressure level (H/M/L)	dB(A)	48/45/42	48/46/44	54/52/49	55/52/50
Liquid Connecting Pipe Dia.	In.	∅3/8	∅3/8	∅3/8	∅3/8
Gas Connecting Pipe Dia.	In.	∅5/8	∅5/8	∅3/4	∅7/8
Drain Pipe External Dia.	In.	∅1	∅1	∅1 1/4	∅1 1/4
Drain Pipe Thickness	In.	3/32	3/32	1/16	1/16
Unit Dimensions (W x D x H)	In.	48 3/8 x 30 1/2 x 11 3/8	48 3/8 x 30 1/2 x 11 3/8	58 3/8 x 31 1/8 x 15 3/16	66 3/8 x 34 1/4 x 17 3/4
Shipping Dimensions (W x D x H)	In.	52 11/16 x 34 1/2 x 12	52 11/16 x 34 1/2 x 12	62 1/8 x 34 3/4 x 18 9/16	70 3/8 x 38 7/8 x 22 7/8
Net weight/ Gross weight	Lbs.	104/119	104/119	181/229	232/309
Loading 40' GP	set	128	128	52	52
Loading 40' HQ	set	128	128	65	65

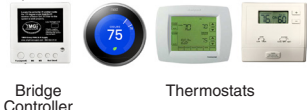
Low Static Pressure Duct Recessed Mount Indoor Unit



Wall Controller Included



Optional:



Bridge Controller

Thermostats

Low Profile

7 7/8 inch profile allows for easy installation and servicing.

Intelligent Drainage Device

Built-in 40" water lift condensate pump and overflow protection.

Easy Installation

Four mounting slots allow for easy mounting from joists or ceilings. Unit also features dual return connections on the bottom, rear and sides.

Convenient Maintenance

Tab type plastic filter, detachable fan motor, independent water pump and electric box assemblies for easy maintenance.

Protection Functions

Built-in water overflow, anti-freezing, fan motor overload, and temperature sensor malfunction protection.

Digital Display

Users and technicians can use the display to see status and error codes.

Thermostat Controller

By using a bridge controller, North American style thermostats (Nest, Honeywell, Pro1, YMGI etc.) can be used for temperature control.

Model		VRFI-07EF-L2B(55)5	VRFI-09EF-L2B(55)5	VRFI-12EF-L2B(55)5
Cooling Capacity	Btu/h	7500	9500	12000
Heating Capacity	Btu/h	8500	10500	13500
Power supply	V/Ø/Hz	208/230/1/60	208/230/1/60	208/230/1/60
Power consumption	W	43	43	43
Airflow volume	m³/h	450/400/250	450/400/250	550/450/350
	CFM	265/235/150	265/235/150	325/265/205
Related Current Heating / Cooling	A	0.3	0.3	0.3
	Pa	15/0~30	15/0~30	15/0~30
ESP	IWG	up to 0.12"	up to 0.12"	up to 0.12"
Sound pressure level (H/M/L)	dB(A)	31/29/25	31/29/25	32/30/27
Liquid Connecting Pipe Dia.	In.	Ø1/4	Ø1/4	Ø1/4
Gas Connecting Pipe Dia.	In.	Ø3/8	Ø1/2	Ø1/2
Drain Pipe External Dia.	In.	Ø1	Ø1	Ø1
Drain Pipe Thickness	In.	3/32	3/32	3/32
Unit Dimensions (W x D x H)	In.	27 1/2 x 24 1/4 x 7 7/8	27 1/2 x 24 1/4 x 7 7/8	27 1/2 x 24 1/4 x 7 7/8
Shipping Dimensions (W x D x H)	In.	35 1/8 x 29 1/4 x 12	35 1/8 x 29 1/4 x 12	35 1/8 x 29 1/4 x 12
Net weight/ Gross weight	Lbs.	51/64	51/64	51/64
Loading 40' GP	set	192	192	192
Loading 40' HQ	set	192	192	192

Model		VRFI-14EF-L2B(55)5	VRFI-18EF-L2B(55)5	VRFI-24EF-L2B(55)5
Cooling Capacity	Btu/h	14000	18000	22000
Heating Capacity	Btu/h	15000	20000	24000
Power supply	V/Ø/Hz	208/230/1/60	208/230/1/60	208/230/1/60
Power consumption	W	52	99	99
Airflow volume	m³/h	700/600/450	1000/800/600	1000/800/600
	CFM	410/355/265	590/470/355	590/470/355
Related Current Heating / Cooling	A	0.5	0.5	0.5
	Pa	15/0~30	15/0~30	15/0~30
ESP	IWG	up to 0.12"	up to 0.12"	up to 0.12"
Sound pressure level (H/M/L)	dB(A)	33/31/28	35/33/30	35/33/30
Liquid Connecting Pipe Dia.	In.	Ø3/8	Ø3/8	Ø3/8
Gas Connecting Pipe Dia.	In.	Ø5/8	Ø5/8	Ø5/8
Drain Pipe External Dia.	In.	Ø1	Ø1	Ø1
Drain Pipe Thickness	In.	3/32	3/32	3/32
Unit Dimensions (W x D x H)	In.	35 3/8 x 24 1/4 x 7 7/8	43 1/4 x 24 1/4 x 7 7/8	43 1/4 x 24 1/4 x 7 7/8
Shipping Dimensions (W x D x H)	In.	44 1/2 x 29 1/4 x 12	52 x 29 1/4 x 12	52 x 29 1/4 x 12
Net weight/ Gross weight	Lbs.	60/73	69/86	69/86
Loading 40' GP	set	192	162	162
Loading 40' HQ	set	192	162	162

4-way Cassette Ceiling Mount Indoor Unit



DC Inverter Motor

Motor efficiency is improved by 30% over standard motors.

Ultra-Low Noise Operation

Stepless speed regulation and scientifically optimized fan wheel design enable quiet operation.

Intelligent Drainage Device

Built-in 40" water lift condensate pump and overflow protection.

Protection Function

Water overflow, anti-freezing, temperature sensor malfunction, and fan motor overload protection.

Strong and Balanced Airflow

4-way airflow, variable fan speeds ensure consistent and comfortable circulation.

Digital Display

Users and service technicians can use the display to see status and error codes.

Thermostat Controller

By using a bridge controller, North American style thermostats (Nest, Honeywell, Pro1, YMGI, etc.) can be used for temperature control.

Wall Controller Included



Optional:



Bridge Controller

Thermostats

Model		VRFI-07EC4-D2B(55)5	VRFI-09EC4-D2B(55)5	VRFI-12EC4-D2B(55)5	VRFI-15EC4-D2B(55)5	VRFI-18EC4-D2B(55)5
Cooling Capacity	Btu/h	7500	9500	12000	15000	18000
Heating Capacity	Btu/h	8500	10500	13500	17000	20000
Power supply	V/∅/Hz	208/230/1/60	208/230/1/60	208/230/1/60	208/230/1/60	208/230/1/60
Power consumption	W	48	59	59	59	59
Airflow volume	m³/h	750/650/550	1000/900/750	1000/900/750	1000/900/750	1000/900/750
	CFM	440/385/325	590/530/440	590/530/440	590/530/440	590/530/440
Related Current Heating/ Cooling	A	0.3	0.5	0.5	0.5	0.5
Sound pressure level (H/M/L)	dB(A)	36/34/31	37/35/32	37/35/32	37/35/32	37/35/32
Liquid Connecting Pipe Dia.	In.	∅1/4	∅1/4	∅1/4	∅1/4	∅3/48
Gas Connecting Pipe Dia.	In.	∅3/8	∅1/2	∅3/8	∅3/8	∅5/8
Drain Pipe External Dia.	In.	∅1	∅1	∅1	∅1	∅1
Drain Pipe Thickness	In.	3/32	3/32	3/32	3/32	3/32
Main Body (W x D x H)	In.	33 x 33 x 7 1/2	33 x 33 x 9 1/2	33 x 33 x 9 1/2	33 x 33 x 9 1/2	33 x 33 x 9 1/2
Shipping Dimensions (W x D x H)	In.	37 15/16 x 37 15/16 x 10 11/16	37 15/16 x 37 15/16 x 12 13/16	37 15/16 x 37 15/16 x 12 13/16	37 15/16 x 37 15/16 x 12 13/16	37 15/16 x 37 15/16 x 12 13/16
Net weight/ Gross weight	Lbs.	50/64	58/75	58/75	58/75	58/75
Panel(W x D x H)	In.	37 3/8 x 37 3/8 x 2 1/2	37 3/8 x 37 3/8 x 2 1/2	37 3/8 x 37 3/8 x 2 1/2	37 3/8 x 37 3/8 x 2 1/2	37 3/8 x 37 3/8 x 2 1/2
Shipping Dimensions (W x D x H)	In.	40 11/16 x 40 7/8 x 5 1/4	40 11/16 x 40 7/8 x 5 1/4	40 11/16 x 40 7/8 x 5 1/4	40 11/16 x 40 7/8 x 5 1/4	40 11/16 x 40 7/8 x 5 1/4
Net weight/ Gross weight	Lbs.	15/24	15/24	15/24	15/24	15/24
Loading 40' GP	set	167	140	140	140	140
Loading 40' HQ	set	171	156	156	156	156

Model		VRFI-24EC4-D2B(55)5	VRFI-30EC4-D2B(55)5	VRFI-36EC4-D2B(55)5	VRFI-42EC4-D2B(55)5	VRFI-48EC4-D2B(55)5
Cooling Capacity	Btu/h	24000	30000	36000	42000	48000
Heating Capacity	Btu/h	27000	34000	40000	47000	54000
Power supply	V/∅/Hz	208/230/1/60	208/230/1/60	208/230/1/60	208/230/1/60	208/230/1/60
Power consumption	W	59	98	110	110	110
Airflow volume	m³/h	1180/950/850	1500/1350/1100	1700/1400/1100	1860/1500/1150	1860/1500/1150
	CFM	695/560/550	885/795/650	1000/825/650	1095/880/675	1095/880/675
Related Current Heating/ Cooling	A	0.5	0.8	0.9	0.9	0.9
Sound pressure level (H/M/L)	dB(A)	38/36/33	40/38/35	41/38/36	43/41/38	43/41/38
Liquid Connecting Pipe Dia.	In.	∅3/8	∅3/8	∅3/8	∅3/8	∅3/8
Gas Connecting Pipe Dia.	In.	∅5/8	∅5/8	∅5/8	∅5/8	∅5/8
Drain Pipe External Dia.	In.	∅1	∅1	∅1	∅1	∅1
Drain Pipe Thickness	In.	3/32	3/32	3/32	3/32	3/32
Main Body (W x D x H)	In.	33 x 33 x 9 1/2	33 x 33 x 12 5/8	33 x 33 x 12 5/8	33 x 33 x 12 5/8	33 x 33 x 12 5/8
Shipping Dimensions (W x D x H)	In.	37 15/16 x 37 15/16 x 12 13/16	37 15/16 x 37 15/16 x 16 1/8	37 15/16 x 37 15/16 x 16 1/8	37 15/16 x 37 15/16 x 16 1/8	37 15/16 x 37 15/16 x 16 1/8
Net weight/ Gross weight	Lbs.	58/75	72/88	72/88	72/88	72/88
Panel(W x D x H)	In.	37 3/8 x 37 3/8 x 2 1/2	37 3/8 x 37 3/8 x 2 1/2	37 3/8 x 37 3/8 x 2 1/2	37 3/8 x 37 3/8 x 2 1/2	37 3/8 x 37 3/8 x 2 1/2
Shipping Dimensions (W x D x H)	In.	40 11/16 x 40 7/8 x 5 1/4	40 11/16 x 40 7/8 x 5 1/4	40 11/16 x 40 7/8 x 5 1/4	40 11/16 x 40 7/8 x 5 1/4	40 11/16 x 40 7/8 x 5 1/4
Net weight/ Gross weight	Lbs.	15/24	15/24	15/24	15/24	15/24
Loading 40' GP	set	140	104	104	104	104
Loading 40' HQ	set	156	119	119	119	119

Floor Ceiling Mount Indoor Unit



Wall Controller Included



Optional:



Bridge Controller



Thermostats

Hoisted or Seated, Flexible Installation

Unit can be hoisted or seated. When seated, a suspended ceiling is not required.

Beautiful Appearance

With an elegant front panel, the unit design is complimentary to any room's decor.

Protection Function

Anti-freezing, temperature sensor malfunction, and fan motor overload protection.

Horizontal and Vertical Air Swing

Wider air sweeping range makes for a comfortable working and living environment.

Digital Display

Users and service technicians can use the digital display to see status and error codes.

Thermostat Controller

By using a bridge controller, North American style thermostats (Nest, Honeywell, Pro1, YMG etc.) can be used for temperature control.

Model		VRFI-09EU-D2B(55)5	VRFI-12EU-D2B(55)5	VRFI-18EU-D2B(55)5	VRFI-24EU-D2B(55)5
Cooling Capacity	Btu/h	9500	12000	18000	24000
Heating Capacity	Btu/h	10500	13500	20000	27000
Power supply	V/∅/Hz	208/230/1/60	208/230/1/60	208/230/1/60	208/230/1/60
Power consumption	W	40	40	50	75
Airflow volume	m ³ /h	650/585/520	650/585/520	950/865/699	1400/1150/1085
	CFM	380/345/305	380/345/305	560/510/410	825/675/640
Related Current Heating / Cooling	A	0.5	0.5	0.5	0.55
Sound pressure level (H/M/L)	dB(A)	36/34/32	36/34/32	42/38/33	44/42/39
Liquid Connecting Pipe Dia.	In.	∅1/4	∅1/4	∅3/8	∅3/8
Gas Connecting Pipe Dia.	In.	∅3/8	∅3/8	∅5/8	∅5/8
Drain Pipe External Dia.	In.	∅11/16	∅11/16	∅11/16	∅11/16
Drain Pipe Thickness	In.	1/16	1/16	1/16	1/16
Dimensions (W x D x H)	In.	48 x 27 9/16 x 8 7/8	48 x 27 9/16 x 8 7/8	48 x 27 9/16 x 8 7/8	56 x 27 9/16 x 9 5/8
Shipping Dimensions (W x D x H)	In.	52 1/2 x 32 3/8 x 12 3/8	52 1/2 x 32 3/8 x 12 3/8	52 1/2 x 32 3/8 x 12 3/8	60 15/16 x 32 5/8 x 13 9/16
Net weight/ Gross weight	Lbs.	88/108	88/108	88/108	110/128
Loading 40' GP	set	145	145	145	90
Loading 40' HQ	set	158	158	158	98

Model		VRFI-30EU-D2B(55)5	VRFI-36EU-D2B(55)5	VRFI-42EU-D2B(55)5	VRFI-48EU-D2B(55)5
Cooling Capacity	Btu/h	30000	36000	42000	48000
Heating Capacity	Btu/h	33000	40000	47000	54000
Power supply	V/∅/Hz	208/230/1/60	208/230/1/60	208/230/1/60	208/230/1/60
Power consumption	W	140	160	160	160
Airflow volume	m ³ /h	1600/1445/1183	2000/1600/1282	2000/1813/1452	2000/1813/1452
	CFM	940/850/695	1180/905/755	1180/1065/855	1180/1065/855
Related Current Heating / Cooling	A	0.6	0.7	0.7	0.7
Sound pressure level (H/M/L)	dB(A)	50/47/43	51/47/42	52/49/45	52/49/45
Liquid Connecting Pipe Dia.	In.	∅3/8	∅3/8	∅3/8	∅3/8
Gas Connecting Pipe Dia.	In.	∅5/8	∅5/8	∅5/8	∅5/8
Drain Pipe External Dia.	In.	∅11/16	∅11/16	∅11/16	∅11/16
Drain Pipe Thickness	In.	1/16	1/16	1/16	1/16
Dimensions (W x D x H)	In.	56 x 27 9/16 x 9 5/8	66 15/16 x 27 9/16 x 9 5/8	66 15/16 x 27 9/16 x 9 5/8	66 15/16 x 27 9/16 x 9 5/8
Shipping Dimensions (W x D x H)	In.	60 15/16 x 32 5/8 x 13 9/16	71 15/16 x 32 5/8 x 13 9/16	71 15/16 x 32 5/8 x 13 9/16	71 15/16 x 32 5/8 x 13 9/16
Net weight/ Gross weight	Lbs.	110/128	72/88	72/88	72/88
Loading 40' GP	set	90	84	84	84
Loading 40' HQ	set	98	98	98	98

Console Wall/Floor Mount Indoor Unit



Remote Control



Optional:



Bridge Controller



Thermostats

Multiple Fan Speed

The fan can operate at multiple speeds and satisfy different air flow volume requirements.

Detachable Grille and Long Life Filter

Grille is detachable for easy cleaning. Our long life filter, can go up to 20 times longer between cleaning cycles.

Compact Profile

8 1/2 inch compact profile makes installation easy while using minimal wall or floor space.

Digital Display

Users and service technicians can use the digital display to see status and error codes.

Thermostat Controller

By using a bridge controller, North American style thermostats (Nest, Honeywell, Pro1, YMGI, etc.) can be used for temperature control.

Model		VRFI-07EL-D2B(55)5	VRFI-09EL-D2B(55)5	VRFI-12EL-D2B(55)5	VRFI-18EL-D2B(55)5
Cooling Capacity	Btu/h	7500	9500	12000	18000
Heating Capacity	Btu/h	8500	11000	13500	20000
Power supply	V/Ph/Hz	208/230/1/60	208/230/1/60	208/230/1/60	208/230/1/60
Power consumption	W	15	15	20	40
Airflow volume	m ³ /h	400	400	480	680
	CFM	235	235	282	400
Related Current Heating / Cooling	A	0.17	0.17	0.25	0.4
Sound pressure level	dB(A)	38	38	40	46
Liquid Connecting Pipe Dia.	In.	Ø1/4	Ø1/4	Ø1/4	Ø1/4
Gas Connecting Pipe Dia.	In.	Ø3/8	Ø3/8	Ø3/8	Ø3/8
Drain Pipe External Dia.	In.	Ø1-1/9	Ø1-1/9	Ø1-1/9	Ø1-1/9
Drain Pipe Thickness	In.	3/64	1/25	1/25	1/25
Dimensions (W x D x H)	In.	27 5/9 x 8 1/2 x 23 5/8	27 5/9 x 8 1/2 x 23 5/8	27 5/9 x 8 1/2 x 23 5/8	27 5/9 x 8 1/2 x 23 5/8
Shipping Dimensions (W x D x H)	In.	31 x 11 9/64 x 27 7/16	31 x 11 9/64 x 27 7/16	31 x 11 9/64 x 27 7/16	31 x 11 9/64 x 27 7/16
Net weight/ Gross weight	Lbs.	35.3/41.9	35.3/41.9	35.3/41.9	35.3/41.9
Loading 40' GP	set	460	460	460	460
Loading 40' HQ	set	460	460	460	460

Fresh Air Processing Unit



One System, Two Functions

Designed with DC Inverter technology, Fresh Air DC Inverter Multi VRF Systems feature air conditioning function and fresh air function.

Lower operating costs

Unit can control refrigerant output according to actual need, to ensure constant airflow temperature. By adjusting power output, high power light-load operation can be avoided.

Requires Less Installation Space

Especially suited for places that have limited installation space.

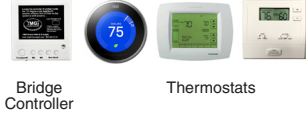
Wall Mounted Indoor Unit



Remote Control



Optional:



Bridge Controller

Thermostats

Vertical Air Circulation Eliminates Room Temperature Gradients

In cooling mode, the vent blade automatically directs air horizontally and upwards. In heating mode, the vent blade automatically directs air horizontally and downwards.

Triple Filtration for Cleaner Air

Mildew-proof filter, electrostatic fiber and anti-bacterial fiber adopted to remove dust, odors, bacteria and mildew.

Cold Air Prevention Design

When in heating mode, the fan motor will not start until the coil has warmed up, so that only heated air is circulated during operation.

Multiple Protections

Anti-freezing, temperature sensor malfunction, and fan motor overload protection.

Digital Display

Users and service technicians can use the digital display to see status and error codes.

Thermostat Controller

By using a bridge controller, North American style thermostats (Nest, Honeywell, Pro1, YMG, etc.) can be used for temperature control.

Model		VRFI-07EW-D2B(55)5	VRFI-09EW-D2B(55)5	VRFI-12EW-D2B(55)5	VRFI-18EW-D2B(55)5	VRFI-24EW-D2B(55)5
Cooling Capacity	Btu/h	7500	9500	12000	18000	24000
Heating Capacity	Btu/h	8500	10500	13500	20000	25500
Power supply	V/∅/Hz	208/230/1/60	208/230/1/60	208/230/1/60	208/230/1/60	208/230/1/60
Power consumption	W	50	50	60	60	70
Airflow volume	m ³ /h	500/420/350	500/420/350	630/550/480	630/550/480	750/600/500
	CFM	294/247/206	294/247/206	371/324/282	371/324/282	441/353/294
Related Current Heating/ Cooling	A	0.2	0.2	0.21	0.21	0.31
Sound pressure level (H/M/L)	dB(A)	38/34/30	38/34/30	44/41/38	44/41/38	44/41/38
Liquid Connecting Pipe Dia.	In.	∅1/4	∅1/4	∅1/4	∅1/4	∅3/8
Gas Connecting Pipe Dia.	In.	∅3/8	∅3/8	∅1/2	∅1/2	∅5/8
Drain Pipe External Dia.	In.	∅11/16	∅11/16	∅11/16	∅11/16	∅1 1/16
Drain Pipe Thickness	In.	1/16	1/16	1/16	1/16	1/16
Dimensions (W x D x H)	In.	33 7/32 x 7 x 10 5/6	33 7/32 x 7 x 10 5/6	37 x 7 7/8 x 11 3/4	37 x 7 7/8 x 11 3/4	39 11/16 x 8 3/4 x 12 9/16
Shipping Dimensions (W x D x H)	In.	38 3/8 x 10 3/16 x 14 9/16	38 11/32 x 10 1/16 x 14 9/16	42 x 11 3/8 x 15 9/16	42 x 11 11/32 x 15 9/16	44 1/2 x 15 11/16 x 13
Net weight/ Gross weight	Lbs.	22/27.6	22/27.6	27.6/33.1	27.6/33.1	33.1/40.8
Loading 40' GP	set	702	702	557	557	441
Loading 40' HQ	set	819	819	624	624	503

Model		VRFI-72FA-H2B(55)5	VRFI-96FA-H2B(55)5
Cooling Capacity	Btu/h	72000	96000
Heating Capacity	Btu/h	55000	68000
Power supply	V/∅/Hz	208~230/1/60	208~230/1/60
Power consumption	W	760	860
Airflow volume	m ³ /h	2000/2000~3500	2500/2000~3500
	CFM	1177/1177~2060	1471/1177~2060
Related Current Heating / Cooling	A	4.3	4.9
ESP	Pa	200/50~270	200/50~280
	IWG	up to 1.09	up to 1.13
Sound pressure level (H/M/L)	dB(A)	50	51
Liquid Connecting Pipe Dia.	In.	∅3/8	∅3/8
Gas Connecting Pipe Dia.	In.	∅3/4	∅3/4
Drain Pipe External Dia.	In.	1 3/16	1 3/16
Drain Pipe Thickness	In.	1/16	1/16
Dimensions (Wx D x H)	In.	58 3/8 x 31 1/8 x 15 1/8	58 3/8 x 31 1/8 x 15 1/8
	In.	62 1/8 x 34 3/4 x 18 5/8	62 1/8 x 34 3/4 x 18 5/8
Net weight/ Gross weight	Lbs.	181/229	181/229
Loading 40' GP	set	52	52
Loading 40' HQ	set	65	65



QUALITY AND VERSATILITY

From single family homes to multi-floor office buildings, YMGI's economical and environmentally friendly Indoor units are built to provide the comfort and reliability your project demands. YMGI's Indoor Units are designed for easy installation, while being some of the most efficient and economical units available.

The Indoor Units listed in this brochure, are designed to work with YMGI's Solar Series, UltraHeating, and Heat Recovery VRF systems.



YMGI Group
601 Arrow Lane, O'Fallon, MO 63366
www.ymgigroup.com

P: 866-833-3138 • F: 866-377-3355 • info@ymgigroup.com

© 2017 YMGI Group. Product specifications are subject to change without notice.

